

# Opportunities

TO BELIEVE, BELONG AND BECOME!

OUR WORK ON GOD'S  
BEHALF BEGINS WITH  
THESE

**You don't have to be a member  
to be involved at Bower Hill!**

Bower Hill Community Church  
offers many opportunities  
for education and fellowship .

To learn more, look inside!

**Welcome stranger!**

**Welcome friend!**

**Welcome member!**



This booklet is filled with information and opportunities to get involved in the life and ministry at Bower Hill Community Church. Community is not only a part of our name, but it is an essential part of our identity. We are called to be a community of faith in worship and fellowship together. Inside this booklet you will find opportunities to become a part of our community as we come together to worship God as a family of faith united in joys and in sorrows. We are also called to be a community of faith in action together. We live out our faith in response to God's faithfulness to us by putting our faith into action in the community around us both near and far. It is our mission. It is our purpose to grow spiritually as individuals and as a community so that we are nourished and empowered to do justice and show mercy on God's behalf. Won't you join us, stranger, friend, member, for all are welcome as we live as a community of faith called into being by God's love! Won't you join us, stranger, friend, member, as we live out our call to share God's love with the community?

**Rev. Laurie Sponagle**



Since the beginning of time, God has reached out in love and compassion to humankind. Even when we have been unaware of God, God has been aware of us; knowing all there is to know about us and loving us still. Sometimes, as we become aware of God we desire to draw closer to God by becoming active in a church; saying yes to God by becoming a member of God's family represented by the church.

If God is calling you to be more involved, we invite you to consider becoming a member of Bower Hill. As we believe that faith development is a journey of a lifetime, we do not have a time consuming and rigid set of procedures to join the church. If you are thinking about church membership, our process is simple:

**Let us know if you are interested**

**Meet with the pastor**

**Affirm your faith in worship**

<b>Letter of Welcome</b>	<b>1</b>	<b>Opportunities in Mission Service</b>	<b>11-14</b>
<b>Worship and Education Schedule</b>	<b>3</b>	<b>Opportunities to Serve BHCC</b>	<b>15-16</b>
<b>Office Hours and Staff</b>	<b>4</b>	<b>Worship Volunteers</b>	<b>15</b>
<b>Church Leadership</b>	<b>5-6</b>	Coffee Hour Hosts	
<b>Opportunities for Spiritual Growth</b>	<b>7</b>	Communion Preparation	
Special services, Faith in Action		Communion Servers	
<b>Opportunities for Children &amp; Youth</b>	<b>8</b>	Greeters	
Baptism		Lector	
Confirmation Classes		Sound System Operator	
Nursery		Ushers	
Sunday School		<b>Facility &amp; Fellowship</b>	<b>16</b>
Vacation Bible School		House Day/Earth Day	
Youth Group		Flea Market	
<b>Opportunities for Adults</b>	<b>9</b>	Deck/De-Deck the Halls	
Adult Education Class		Easter Breakfast	
Koinonia		Softball Team	
Men's Group		Promotional Team	
Bookworms		<b>Opportunities for the Community</b>	<b>17</b>
<b>Opportunities in Music Ministry</b>	<b>10</b>	Boy Scouts	
Bell Choir		Cub Scouts	
Chancel Choir		Girl Scouts	
Instrumentalists		Compassionate Friends	
Children's Choirs		DART	
Fall Concert Series		Facility Request Forms	
		<b>Facility Maps</b>	<b>18</b>

## Table of Contents

### Regular Sunday Worship and Education Schedule

**Fall - Spring Schedule**  
Sept 7, 2008  
through May 17, 2009

**Worship Service and  
Pre-School - 5th Grade Education**  
9:30 - 10:30 a.m.

**Fellowship Time**  
Begins at 10:30 a.m.

**Adult, Senior High  
and Middle School Education,  
Preschool - 5th Grade Activity Time**  
10:45 - 11:45 a.m.

**Communion**  
is celebrated the first Sunday of every month.

**Childcare for infants and toddlers**  
is available on Sundays from 9:15 to 11:45 a.m.  
in our Nursery near the Sanctuary.  
Ask an usher for directions.

**Summer Schedule**  
May 24, 2009  
through September 13, 2009

**Worship Service**  
9:30 - 10:30 a.m.

**Fellowship Time**  
Begins at 10:30 a.m.

**Communion**  
is celebrated the first Sunday of every month.

**Childcare for infants and toddlers**  
is available during Worship.  
Ask an usher for directions.

## BHCC Office Hours and Staff

**Office Hours**  
Monday Through Friday  
9:00 am. to 2:30 p.m.

**Office Phone**  
412-561-4114

**Fax**  
412-561-2252

**Email**  
office@bhccml.com

**Website**  
www.bhccml.com

All staff and a  
Worship Schedule recording  
can be reached  
at the general office number:

**412-561-4114**

Outside of office hours,  
You may leave a message on the voice  
mail of the staff member you are trying  
to reach and your call will be returned  
as soon as possible.

<b>Staff Position</b>	<b>Staff Member</b>	<b>Email</b>
Pastor	Laurie Sponaugle	la@bhccml.com
Director of Music Ministries	Jessica Baier	je@bhccml.com
Director of Youth Ministries	Brian Hayes	br@bhccml.com
Administrative Secretary	Emily Kerr	em@bhccml.com
Financial Secretary	Dianne Scott	di@bhccml.com
Custodian	Mike Bergen	
Sunday Childcare	Sylvia Smith	

## Opportunities for Church Leadership

### Session

This elected board is responsible for overseeing, guiding, and directing the ministries, programs, and mission of the church.

**It meets on the 4th Monday of the month at 7:00 p.m. in the Lounge.**

Please see page 6 for a complete list of Committees and meeting times. Contact the Office with any questions.

### Deacons

The members of this elected board are the structured expression of care to the members of the church family.

**When necessary, they meet the 3<sup>rd</sup> Monday of the month at 7:00 p.m. in the Lounge.**

This year, BHCC's Deacons have "gone digital" and will be using email as a primary mode of communication in months when no new business is at hand.

Contact Moderator Mary Good to confirm monthly meetings. (412)341-0291

---

### Deacons

2009	2010	2011
**Mary Good	Theresa Child	Nancy Criswell
Ben Hohlfelder	Nancy Geis	Nancy Green
Anne Mitchell	Tom Hayes	Judy Lunoe
Phyllis Yohe	Linda Johnson	Doris Olinger
Margaret Zabo	Kate Junker	Karen Zoll

\*\*Moderator

<b>Position / Committee</b>	<b>Session Member (bolded)/ Committee Members</b>	<b>Meeting Time/Place</b>
Clerk Of Session	<b>Phyllis Yohe</b>	
Treasurer	Kurt Kerner	
Administration & Personnel	* <b>Patricia Jacobs, Glenn Child</b> , George Freas, Judy Delestienne, Gordon Mitchell, <b>Phyllis Yohe</b>	3rd Sunday 11:45 a.m. Office
Buildings & Grounds	* <b>Philip Johnson</b> , Bill Andrew, Bob Bridges, Carol Knox, <b>Todd Westerhoff</b>	2nd Tuesday 7p.m. Office
Christian Education	* <b>Deborah Hayes</b> , Susan Hicks, Dawn Kane, <b>John Zoll</b>	CE: 2nd Monday, 7:30 p.m., Office
Adult Education	* <b>Nina Helbling</b> , Jack Brannan, <b>Pete Fenton</b> , Nancy Green, LuAnn McNickle, Bob Winnett	AE: 2nd Sunday, 11:45 a.m., Library
Evangelism & Membership	* <b>Jim McAnulty</b> , Jim Burke, <b>Glenn Child</b> , Theresa Child, Cynthia Gissin, Dave Green, Phil Johnson, Keith Mason, <b>Joan McAnulty</b> , Donna Williams and John Yohe	2nd Monday 7p.m. Lounge
Community Building		
Promotional Team		
Finance & Stewardship	<b>Alan Hohlfelder, Dave Green</b>	To Be Announced
Mission	* <b>Steve Boisvert, Dave Green</b> , Dave Hicks, <b>Alan Hohlfelder</b> , Betsy Hohlfelder, Rick Jacobs, Chan Ketchum, Truman Kohman, LuAnn McNickle, Dave Stewart	2nd Monday 7:30 p.m. Room 103
Nominating & Presbytery	* <b>Bill Cadwell, Nina Helbling</b>	To Be Announced
Music & Worship	* <b>Jean Miewald</b> , Margie Sewall, Emeritus; <b>George Vosburgh</b> , Donna Williams, Bob Winnett, Margaret Zabo, Joan Zakor  Staff Support: Jessica Baier	1st Tuesday 7 p.m. Music Room
Youth Ministries	* <b>Dennis Geis Jr., Tom Hayes</b> , Christine Henney, Mary Beth Waine, <b>Tim Lease</b>  Staff Support: Brian Hayes	1st Monday 7 p.m. Brian's Office

\*Committee Chairperson

## Opportunities for Spiritual Growth

### Sunday Services

#### **9:30 a.m. Worship Celebration**

Everyone gathers in the sanctuary for a time of worship. After the children's message is given, pre-school-5th grade children are invited to proceed to the Education wing to attend Christian Education (Sunday School).

#### **10:30 a.m. Fellowship Time**

The first Sunday of the Month is Birthday Celebration Sunday and there is cake at coffee hour. We greet each other in the Friendship Room the remaining Sundays of the month.

#### **10:45 a.m. Adult & Youth Christian Education**

During this time, nursery care for infants and toddlers is available and activities for children in preschool-5th grade are held in the Lounge.

#### **Sunday Childcare**

Care for infants and toddlers is available on Sundays from 9:15 a.m. to 11:45 a.m. in our Nursery near the sanctuary. Ask an usher for directions.

#### **Communion**

Communion is celebrated the first Sunday of the month. All who have been baptized into the Christian faith (including children and adults who are members in other denominations) are invited to celebrate communion.

### Special Worship Events

#### **Christmas**

On Christmas Eve, we have a 5:30 p.m. Worship Celebration geared towards families with younger children with candlelight, lessons and carols. A candlelight Worship Celebration is held at 8:00 p.m. with more traditional music led by the Chancel Choir.

#### **Epiphany**

We gather in the Fellowship Hall at 9:30 a.m. on January 4, 2009.

#### **Lent and Holy Week**

During Lent, we have special gatherings on Wednesday evenings where we join together in worship or study. On Maundy Thursday, we gather together at 7:30 p.m. for a celebration of communion.

#### **Youth Sunday**

Once a year the youth of the church plan and lead us in worship.

#### **Community Good Friday Service**

A collection of local churches, BHCC included, gather at Mt. Lebanon United Methodist Church, from 12 -3 p.m. to worship together.

#### **Community Thanksgiving Service**

Tuesday, November 25th with Our Lady of Grace, Temple Emanuel and Good Shepherd Lutheran Churches.

#### **Faith in Action Sunday**

#### **Don't Go To Church, Be The Church!**

We will CANCEL our usual Sunday morning worship service and instead participate in one of several mission projects. Please see page 14.

## Opportunities for Our Children and Youth

### Education

#### Nursery

Childcare for infants to age 3 is available on Sundays. Please see page 4 for scheduling.

#### Sunday School

This year, Bower Hill will provide educational opportunities for using an innovative curriculum called Seasons of the Spirit. Every Sunday children and youth will explore the same lesson that is used as the guiding theme of worship. Children in preschool through fifth grade begin in worship and then proceed to class after the children's message. Youth classes will be held after worship. Classes and worship are modeled after the same four movements: gathering: a time of welcome, song and prayer; engaging: a time of in depth exploring of the daily scripture and its connection to our lives; responding: an active time of hands on learning and personal reflection; and blessing: a time for reviewing and sending with a prayer and blessing. As a supplement to the educational experience, elementary students are given home family devotional experience; *Bible Journey*, written by Elder Debby Hayes.

Christian Education Committee  
2nd Monday, 7:30 p.m.  
Office

### Spiritual Growth

#### Baptism/Confirmation Classes

Baptism is the sign of entry into the Christian Church. It is a once in a lifetime event for either infants or adults on a requested date. Both Pastor consultation and Session approval are prerequisites for this sacrament. For eighth/ninth graders considering the meaning of becoming a church member, confirmation classes are held during the year. A service of confirmation is held at the completion of the class.

### Activities

#### Youth Group

Activities for middle high school students are offered throughout the year, and are typically run by our youth leader. Junior/Senior High Fellowship involves recreational outings and service projects. A week-long Senior High Work Trip takes place in the summer. Contact Youth Director, Brian Hayes, for more information: br@bhccml.com or 412-561-4114.

#### Vacation Bible School

Vacation Bible School takes place for one week each summer for children entering kindergarten through grade six. It is a theme based Bible school, which runs in late June. Adults have as much fun as the kids. Planning begins in late January for the 2009 VBS Session, which is scheduled to run June 22 through the 26th.

## Opportunities for Our Adults

---

### Education

#### Adult Education Class

The Adult education class meets on Sunday mornings, from approximately 10:45 a.m. to 11:45 a.m. September through May. The church brings in experts who make presentations and lead discussions related to social justice and spiritual growth. The topics for this class can be found in the News/Events section of the website or the newsletter.

Adult Education Committee  
2nd Sunday  
11:45 a.m., Library

### Spiritual Growth

#### Koinonia

Koinonia is the name of Bower Hill's Women's Bible Study group. Current members of the group will tell you that Koinonia is one of the best things going on at our church! The group meets on Wednesday mornings from 9:00 a.m. until 10:30 a.m. in the Lounge from September through May. Koinonia is a Greek word meaning "fellowship". While we come together to learn and to deepen our faith, equally important is the fellowship we share with one another. A strong Biblical background is not required to be a member...all you need is a desire to grow. If you are interested in joining the group, please call Kathy Philson at 412-531-7539.

### Activities

#### Men's Breakfast Group

The Men's Breakfast Group is a group of men of all ages from our church who meet for social fellowship. They meet on the first Tuesday of each month April through October and the first Wednesday of each month November through March at 8:00 a.m. at King's Restaurant in Heidelberg. If you would like more information, contact Jim McAnulty at 412-833-8450.

#### Bookworms

A group of women from our church meet for book discussion and fellowship on the third Tuesday of each month at 7:30 p.m. at a member's home. Books are selected by the members of the group. New members are always welcome. Please contact the office for the most current titles or contact information.

## Opportunities In Music Ministry

Our music program provides music at our worship services and other special concerts. New members are always welcome. Please contact Music Director Jessica Baier to join or for further information:

je@bhccml.com  
412-561-4114

### Handbell Choir

This choir is for adults and high school students. Practice is held at 6:30 p.m. every Thursday. The bell choir participates in worship once a month.

### Chancel Choir

The Chancel Choir is for adults and high school students. Practice is held at 7:45 p.m. every Thursday and at 9:00 a.m. before the Sunday service. The Chancel Choir participates each Sunday at the 9:30 a.m. service.

### Worship Support

Opportunities are available for instrumentalists and vocalists to provide music during worship at different times during the year.

### King's Kids Clappers

Children in grades 2 through 6 with an interest in hand chimes are invited to join the King's Kids Clappers.

### King's Kids Choir

A pre-school/kindergarten choir is offered for our youngest youth.

Music and Worship Committee  
1st Tuesday  
7 p.m., Music Room

### 2008 Concert Series

The Fall Programming Year at BHCC includes a series of concerts presented by our Music and Worship Committee.

#### Sunday, September 21, 4 p.m. Jessica Baier, organ recital

The Director of Music at BHCC will present an arrangement of organ music including pieces by Herbert Howells, J.S. Bach, Felix Mendelssohn, and an original composition by recent Duquesne University graduate Vincent Rone.

#### Sunday, October 19, 4 p.m. Handbells in Concert

This event will feature handbell soloists Bob and Roberta Erickson. Roberta is Director of Handbells at Oakmont Presbyterian Church and the UP Church of New Kensington. Bob rings with the JuBELLation Ringers at Oakmont Presbyterian Church.

#### Sunday, November 16, 4 p.m. The Aeolian Winds of Pittsburgh

This is primarily a wind quintet, dedicated to bring wind chamber music to the greater Pittsburgh community.

#### Sunday, December 14, 4 p.m. Christmas Concert

This concert will be a joint performance with the Pleasant Hills Community Church, Jonathan Wooding, Director of Music. Our choirs will be combined to give a concert of sacred Christmas music.

## Opportunities In Mission Service

---

**In the past year, we have supported the following missions directly through our giving of time and money:**

Autism Center of Pitt., South Hills  
Bower Hill Braillists  
Bread for the World  
Church World Servers  
East Liberty Family Health Care Center  
Family Hospice and Palliative Care  
Greater Pittsburgh Food Bank  
Heifer Project  
Hekima Place  
Hopi Christian Mission School  
Infinite Family  
Lydia's Place  
Knit for a Cause  
Margaret McKee Fund  
The Medical Benevolence Foundation  
Miryam's House

Mt. Washington Tutoring  
The Neighborhood Academy  
Pittsburgh Theological Seminary  
Pittsburgh Walk Now for Autism  
Presbyterian Coffee Project  
Presbyterian Hunger Project  
Produce to the People  
Scott Conservancy  
Sojourner House  
Soldier Project  
South Hills Interfaith Ministries  
St. Clair Hospital Pillows for Patients  
Unicef  
Washington City Mission  
Wallace Memorial Food Pantry  
World Vision

**Can you help?**

On the following pages, you will find some of BHCC'S most frequent Mission efforts. If you feel called to donate your time, skill or money, please utilize the contact information included or perhaps attend a Mission Committee Meeting:

**Every 2nd Monday  
7:30 p.m.  
Room 103**

## Opportunities In Mission Service

### **Bower Hill Braillists**

The Bower Hill Braillists Foundation was established in 1954. Volunteers create Braille versions of literary books for the lending library, which ships books to readers all over the country. They also produce textbooks, math books, and other educational material for schools and colleges. For those who want to learn how to create Braille material, a 22 week class is conducted once a year.

If you would like more information, contact the Braillists directly at: 412-343-3667.

### **Mt. Washington Tutoring**

Each Tuesday afternoon throughout the school year, several members from Bower Hill travel to the Presbyterian Church of Mt. Washington to tutor second grade students. All lessons are supplied by the coordinator. The program is designed so no teaching experience is necessary. The students' teachers, principals, and families are most appreciative of the time spent with their children. If you would like to become part of this very worthwhile project, please call the BHCC office. It's fun, it's interesting, and it's very rewarding!

### **The Medical Benevolence Foundation,**

In partnership with the Presbyterian Church (USA), provides information about the international health concerns, raises funds to support the health programs, recruits healthcare professionals and other types of volunteers to serve in health related mission programs outside the US. Bower Hill Community Church has made a gift through this foundation to support the building of the Hospital Ste. Croix nursing school and is continuing their support by offering scholarships to nursing students.

### **Presbyterian Coffee Project**

The second Sunday of each month is Fairly Traded Coffee & Tea Sunday at BHCC. PCUSA, in cooperation with Equal Exchange, supports coffee and tea farmers around the world by purchasing coffee and tea from farm cooperatives at a fair price that allows farmers to support their families and improve not only their lives, but also the communities within which they live. Equal Exchange provides assistance in establishing schools and health centers in underprivileged regions, through the sale of their coffees and teas.

### **East Liberty Family Health Care Center**

In 2007, this Christian ministry provided care 39,816 times for 8,186 individual patients. At the two offices in Pittsburgh's East End, the Center provides primary medical care, dental services, mental healthcare and social work. Patients had prescriptions filled at a price they could afford. Bower Hill Community Church provides financial support through its Mission program.

### **Bread for the World**

This is a national Christian citizens movement seeking justice for the world's hungry people by involving our nation's decision makers. BFW Institute seeks justice for hungry people by engaging in research and education on policies related to hunger and development. Bower Hill Community Church supports this program through financial assistance.

### **Knit for a Cause**

Knit for a Cause meets the third Sunday of each month in Brian Hayes's office. The group knits items for those in need. Experienced and beginning knitters are welcome. For details call Brian at 412-561-4114 Ext. 8.

## Opportunities In Mission Service

### **Washington City Mission**

Washington City Mission exists to share Christ, to shelter, to heal and to restore the homeless to independent living. Last year, they provided 133,000 nourishing meals for Mission residents and low income guests. They provided 27,451 nights of safe shelter for homeless men, women and children. They also provided counseling for addiction, mental health and spiritual restoration. Bower Hill helps the mission residents to celebrate Christmas by cooking and serving dinner on Christmas Day, making and hanging decorations in the dining hall, baking pies in our homes for dessert, assembling gift bags for each resident and providing stuffed animals for the children.

### **Sojourner House**

This agency assists addicted women in Pittsburgh and provides daycare to their children under twelve. It is certified as a partial hospitalization program and has a number of apartments available for the women and children following the intensive treatment period. Bower Hill Community Church has supported this ministry through mission projects.

### **Margaret McKee Scholarship Fund**

This scholarship fund was established to encourage members of Bower Hill Community Church to volunteer for mission service. The fund is administrated by the Mission Committee of the Session of BHCC. Requests for scholarships must be made with a written proposal at least 60 days before implementation. This proposal should include the location of the mission service project and the work expected to be performed in addition to the travel and living expenses expected to be incurred during the performance of the mission service. The fund will provide scholarships for up to three quarters of

the expenses of approved proposals up to a maximum scholarship of \$2000.

Past participants include: Jean Miewald (Home construction in Romania), Margaret Zabo (Teaching hand bell ringing in Romania), Sara Waller (Mission Trip to Alaska) and Betsy Hohlfelder (Equipment for mentoring an African child through Infinite Family and a trip to Africa to visit with the child she is mentoring).

### **The Neighborhood Academy (TNA)**

The Neighborhood Academy began in 1993 as an innovative summer school program for at-risk youth. In response to the success of the summer school, The Neighborhood Academy opened its doors as a full year day school in September 2001. It's mission is to break the cycle of generational poverty by preparing low-income youth for higher education by providing a holistic college-prep education for students in grades 8-12 who come from low income families. Bower Hill's Mission Committee and individual congregation members have provided financial support to TNA. Volunteer opportunities exist for both tutors and those willing to assist with the lunch and dinner programs by calling 412-362-2001.

### **Pittsburgh Walk Now for Autism**

The Bower Hill Community Church walking team participates in the Pittsburgh Walk Now for Autism event, generally in the first week of June. Money raised supports Autism Speaks, whose goal is to change the future for all struggling with autism spectrum disorders. To join the Bower Hill Community Church walking team, contact Jim and Joan McAnulty at 412-833-8450 or

## Opportunities to put your Faith in Action

### **"COMMUNITY" IS OUR NAME**

so we, the members of Bower Hill Community Church, are coming together to invite our friends and neighbors to experience a special Sunday.

### **WORSHIP WILL BE CANCELED**

as we reach out to serve and improve our community.

To account for the many skills and talents of the participants there will be many different mission projects throughout the day.

Past projects have included recovery pillows for breast cancer patients at St. Clair Hospital, making lunch and delivering it to the women at Miryam's House, working with the Scott Conservancy to clean up Kane Woods, and presenting an informational Autism Forum.

Keep your eyes open for updates and join us.

A few hours will make a difference in the community...and in YOU.



Look to the BHCC Newsletter and Worship Publications for further information!

The Bower Hill Community Church Newsletter is mailed once a month and contains updates and information on all activities and church happenings.

Timely information can also be found in each week's Worship Bulletin.

To submit an activity for publication keep the following in mind:

Newsletter deadline  
15th of every month

Worship Bulletin Deadline  
Wednesday of the week prior

Submissions require pastoral approval and can be accepted in electronic or handwritten formats.

## Opportunities to Serve BHCC

---

### Membership Volunteers

These responsibilities are coordinated by members of the Evangelism & Membership Committee which meets every 2nd Monday at 7 p.m. in the lounge.

#### Coffee Hour Hosts

Each Sunday, we have a member host the coffee hour after the 9:30 a.m. Worship Celebration. The host's responsibility is to setup the coffee and cold beverages. The hosts often bring a treat such as sweet rolls, banana bread, etc. Typically, a member will volunteer to host a few Sundays a year.

#### Greeters

Each Sunday, we have a greeter at three entrances for the 9:30 a.m. Worship Celebration. The greeters welcome members and visitors to the service. Typically, a greeter will be assigned to one or two Sundays a year. If you would like to get on the list to greet, please contact Jim or Joan McAnulty at 412-833-8450.

### Worship Volunteers

These responsibilities are coordinated by members of the Music & Worship Committee which meets every 2nd Tuesday of the month at 7 p.m. in the Music Room.

#### Communion Preparation

People are needed to bake the bread for communion on a monthly basis. Committee members prepare the plates and cups for serving communion on the first Sunday of the month.

#### Communion Servers

Communion Servers serve communion on the first Sunday of the month. Please contact Jean Miewald to volunteer.

#### Lector

Lectors read a Bible passage and the prayer for the offering at the 9:30 a.m. Worship Celebration every Sunday. If you would like to be a lector, please contact Joan Zakor at 412-276-0975.

#### Sound System Operator

One person runs the sound board during the 9:30 a.m. Worship Celebration. Those interested in learning to run the sound system should contact one of the Pastors via the office.

#### Ushers

Ushers pass out bulletins and collect the offering at the 9:30 a.m. Worship Celebration every Sunday. There are two groups of four ushers and each group performs their duties every other month. Contact Jean Miewald to volunteer.

---

## Facility & Fellowship

### House Day/Earth Day

In order to keep our church beautiful, several times a year, a group of members from our church perform inside or outside activities such as painting, weeding and minor maintenance. Both days are sponsored by the Building & Grounds Committee.

### Flea Market

During the fall, gently used items are collected and priced to be sold at a one day flea market. The proceeds benefit the church. This year's flea market will be held on Saturday, November 22.

### Deck and De-Deck the Halls

Members of the church meet to decorate and/or de-decorate the church for Christmas. These service events are sponsored by the Community Building Committee, a sub-committee of Evangelism and Membership.

### Easter Breakfast

A breakfast of egg casserole, fruit, bagels, and other goodies is served before the Easter Worship Celebration. The breakfast is sponsored by the Community Building Committee, a sub-committee of Evangelism & Membership.

### Softball Team

Our church softball team plays against other men's teams from nearby churches on weekday evenings from May through early August. Contact Brian Hayes at [br@bhccml.com](mailto:br@bhccml.com) or 412-561-4114 for more information.

Help us Spread the word!

Because we want to expand our efforts to promote the goings on at BHCC, we are forming a Promotional Team. If you have any questions contact Theresa Child at (412) 429-9519 or at [treeoowon@yahoo.com](mailto:treeoowon@yahoo.com)

## Opportunities for the Community

As a service to our community, we make our buildings and facilities available for meetings and other events. Here is a partial list of local organizations that meet or hold events at BHCC:

Boy Scouts - Troop 28  
Cub Scouts - Pack 28  
Compassionate Friends  
DART/AIU  
Girl Scouts - Troop 1774 and 1613  
Mt. Lebanon PTA

### **Boy Scouts - Troop 28**

The Boy Scout Troop meets every Tuesday evening throughout the year in Fellowship Hall. For over 50 years, Troop 28 has had a tremendous impact on the lives of the boys and leaders that have participated. Boy Scouting is a program for boys age 11 through 17. For more information, please contact Scoutmaster Mike Fuson via the BHCC office.

### **Cub Scouts - Pack 28**

Cub Scout Pack 28 serves boys age 6 through 10, from the Mt. Lebanon area. Meeting generally on Thursday nights, the pack continues to help boys learn about what it means to be a Scout through both community service and fun, out-door centered activities. For more information, contact Cubmaster Anthony Moretti via the church office.

### **DART/AIU**

The DART program (Discovery, Assessment, Referral, Tracking) is housed in the Christian Education wing of our church. Servicing pre-school aged children, DART's main objectives are to discover children who may have a potential developmental delay, to provide in-depth assessment aimed at identifying a child's individual needs, and to recommend and provide appropriate early intervention services. Please call the DART classroom for further information: 412-344-7607

### **The Compassionate Friends**

The Compassionate Friends is a nonprofit national and international organization. It is a help support group for bereaved parents, siblings and grandparents. Once a month, generally on the fourth Sunday, the group gathers for meetings at Bower Hill Community Church. The lounge is used for the first half of the meeting to facilitate a speaker. After a period of refreshment, the second half of the meeting is dedicated to small groups that break out around the church for more in-depth support based on a particular loss or need. Every other month the steering committee meets, also at the church, to plan and discuss the group's activities. For more information, please use the Pittsburgh Chapter general contact number: 412-835-1105 or email: [compassion@tcfpittsburgh.org](mailto:compassion@tcfpittsburgh.org)

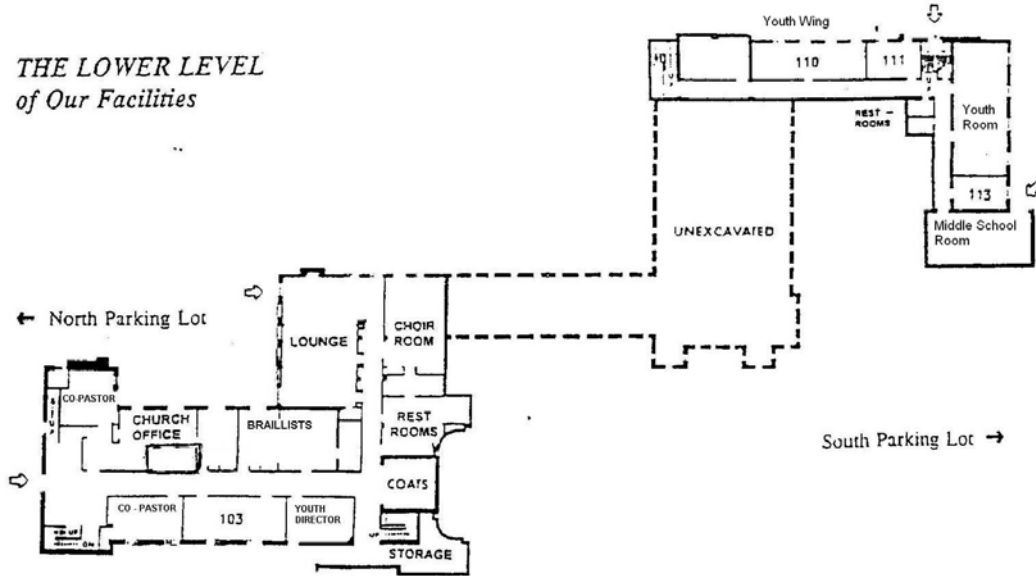
BHCC Facility Request forms can be found on our website at:

[http://www.bhccml.com/web\\_docs/RoomRequestForm.pdf](http://www.bhccml.com/web_docs/RoomRequestForm.pdf)

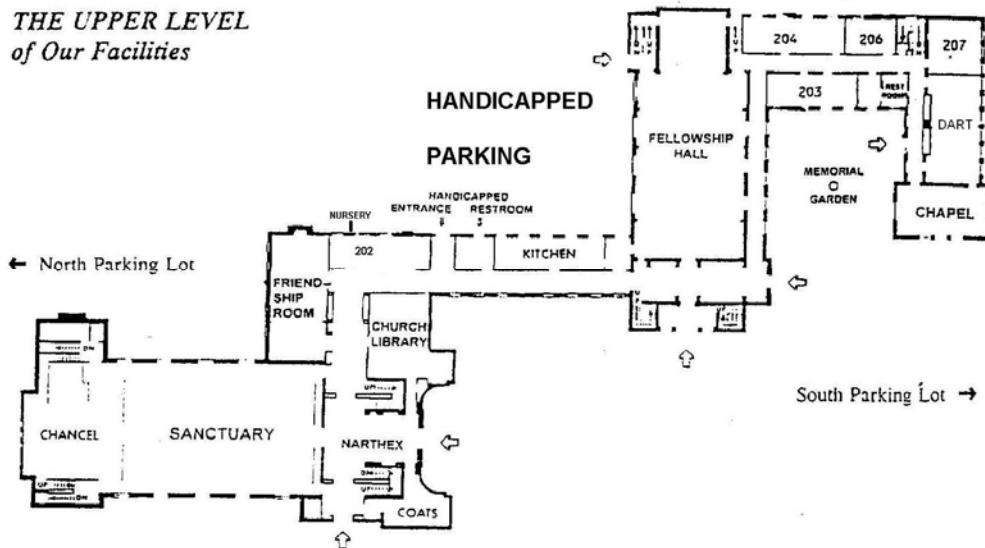
All requests must be approved by Session and are subject to church availability and worship schedules.

# Church Floor Plan

## THE LOWER LEVEL of Our Facilities



## THE UPPER LEVEL of Our Facilities



**YOU DON'T HAVE TO BE A MEMBER  
TO GET INVOLVED AT BOWER HILL**

Bower Hill Community Church offers many opportunities for education and fellowship and you don't have to be a member to participate.

To learn more check out the activity description in this booklet.

**-Worship-Special Services and Faith in Action-**

Page 7 Contact Emily 412-561-4114

**-Children's Education and Fellowship-**

Page 6 Contact Debby Hayes 412-221-6065

**-Adult Education-**

Adult Education Class, Koinonia , Men's Group

Page 9 Contact Emily 412-561-4114

**-Music Programs-**

Page 10 Contact Jessica Baier 412-561-4114

**-Children's Music Programs-**

Kid's Choir, King's Kids Clappers (Bell Choir)

Page 10 Contact Jessica Baier 412-561-4114

**-Fall Music Series-**

Page 10 Contact Jessica Baier 412-561-4114

**-Fellowship-**

Bookworms (Women's Book Discussion), Men's Breakfast Group

Page 9 Contact Emily 412-561-4114